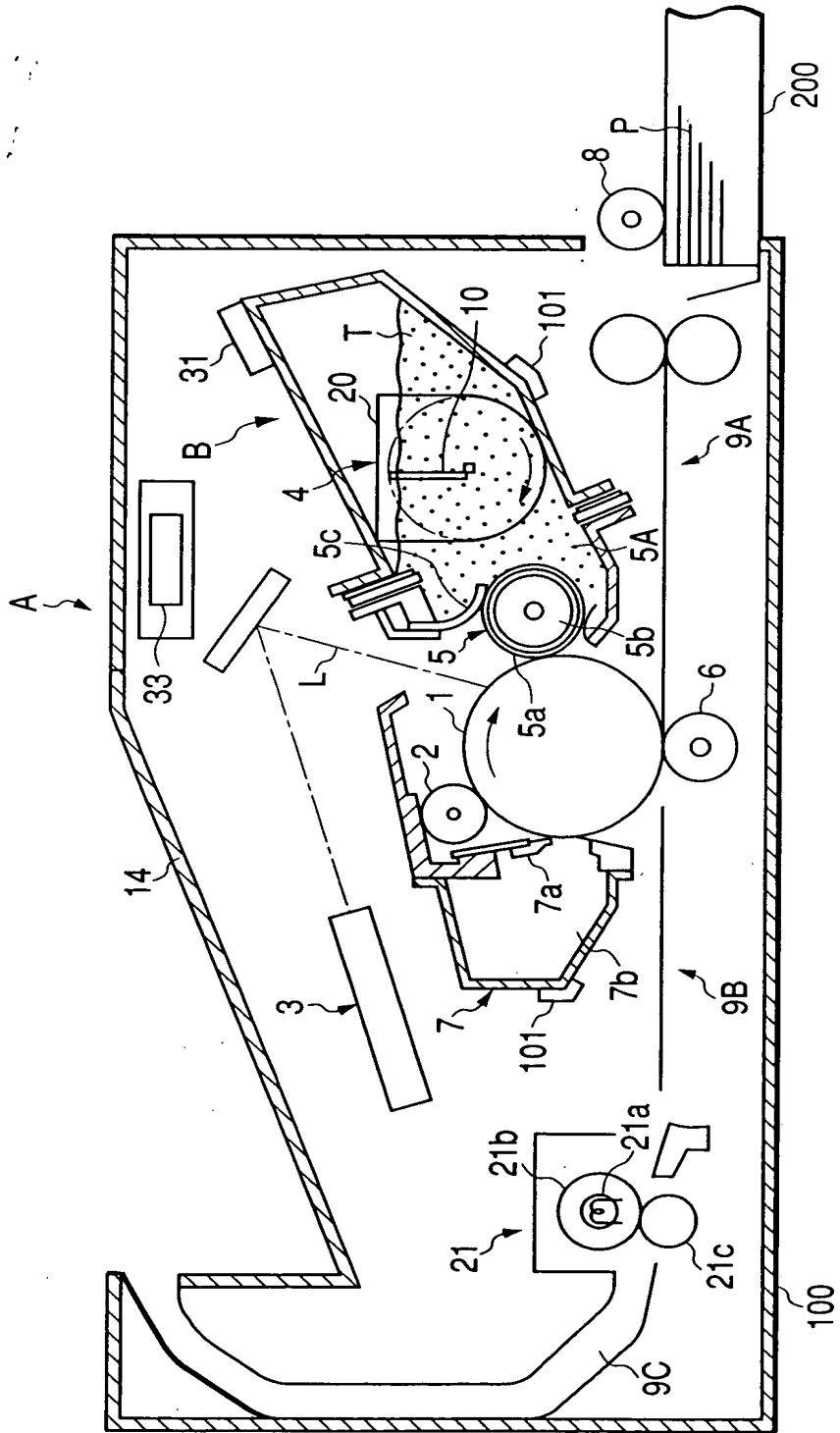


APPROVED	O.G. FIG.	
BY	CLASS	SUBCLASS
DRAFTSMAN		

1/25

006280" 25205960

FIG. 1

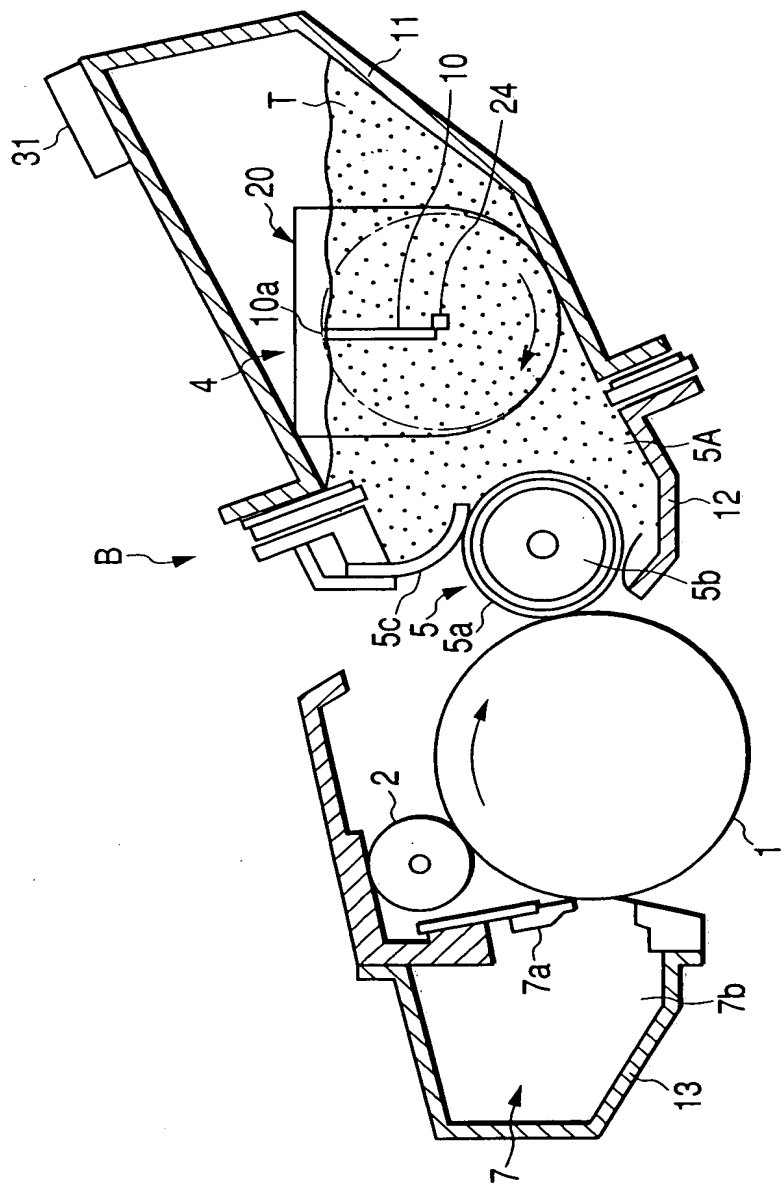


29

APPROVED	O.G. FIG.	
BY	CLASS	SUBCLASS
DRAFTSMAN		

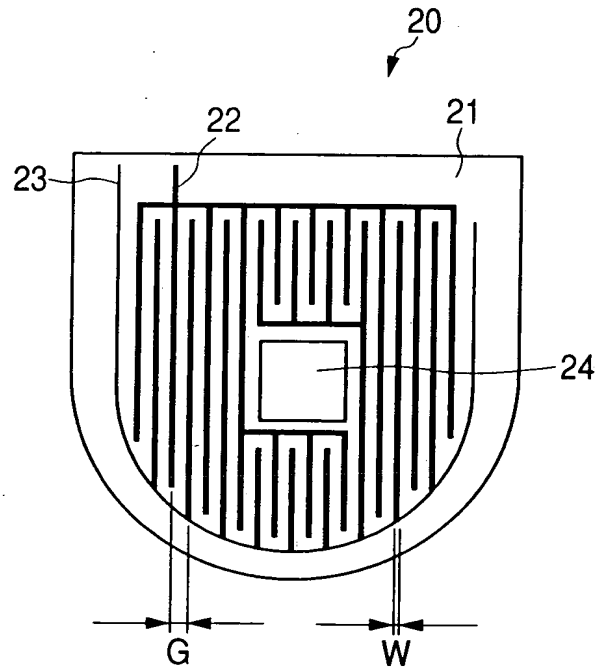
006280 25205960

FIG. 2



APPROVED	O.G. FIG.	
BY	CLASS	SUBCLASS
DRAFTSMAN		

FIG. 3



006280 25205960

APPROVED	O.C. FIG.	
BY	CLASS	SUBJECTS
DRAFTSMAN		

5 / 25

FIG. 5

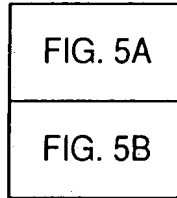
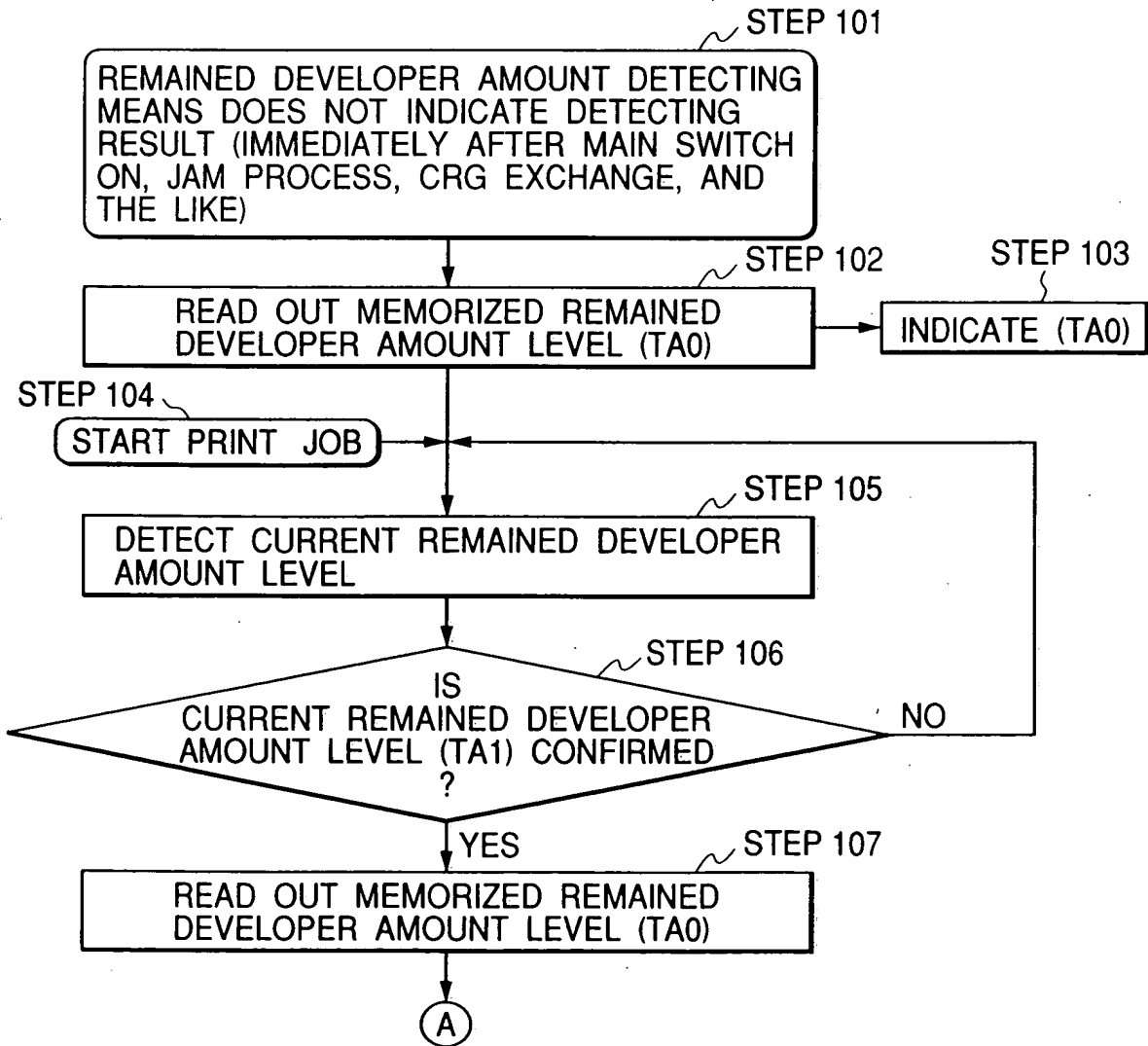
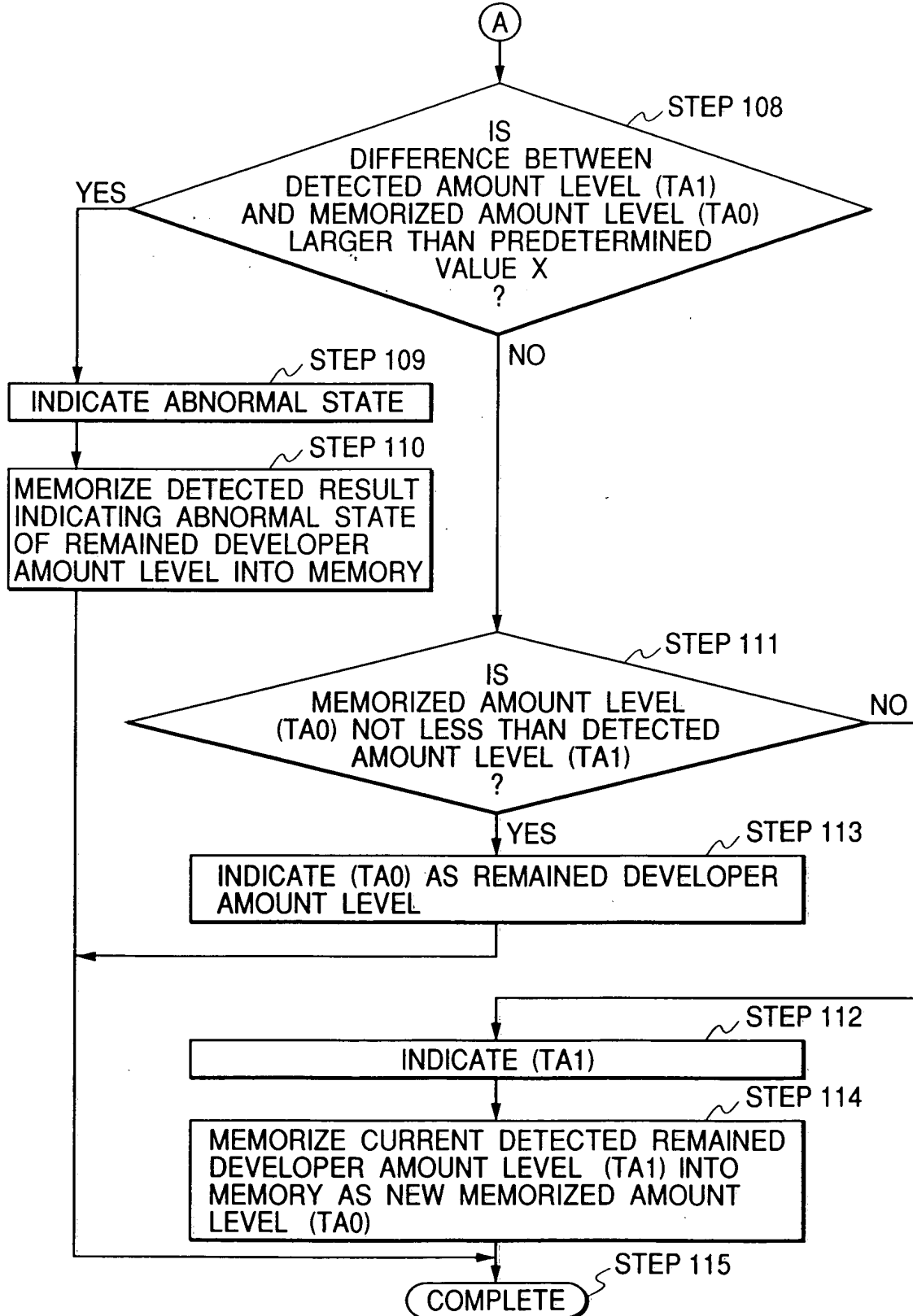


FIG. 5A



006280-25205960

FIG. 5B



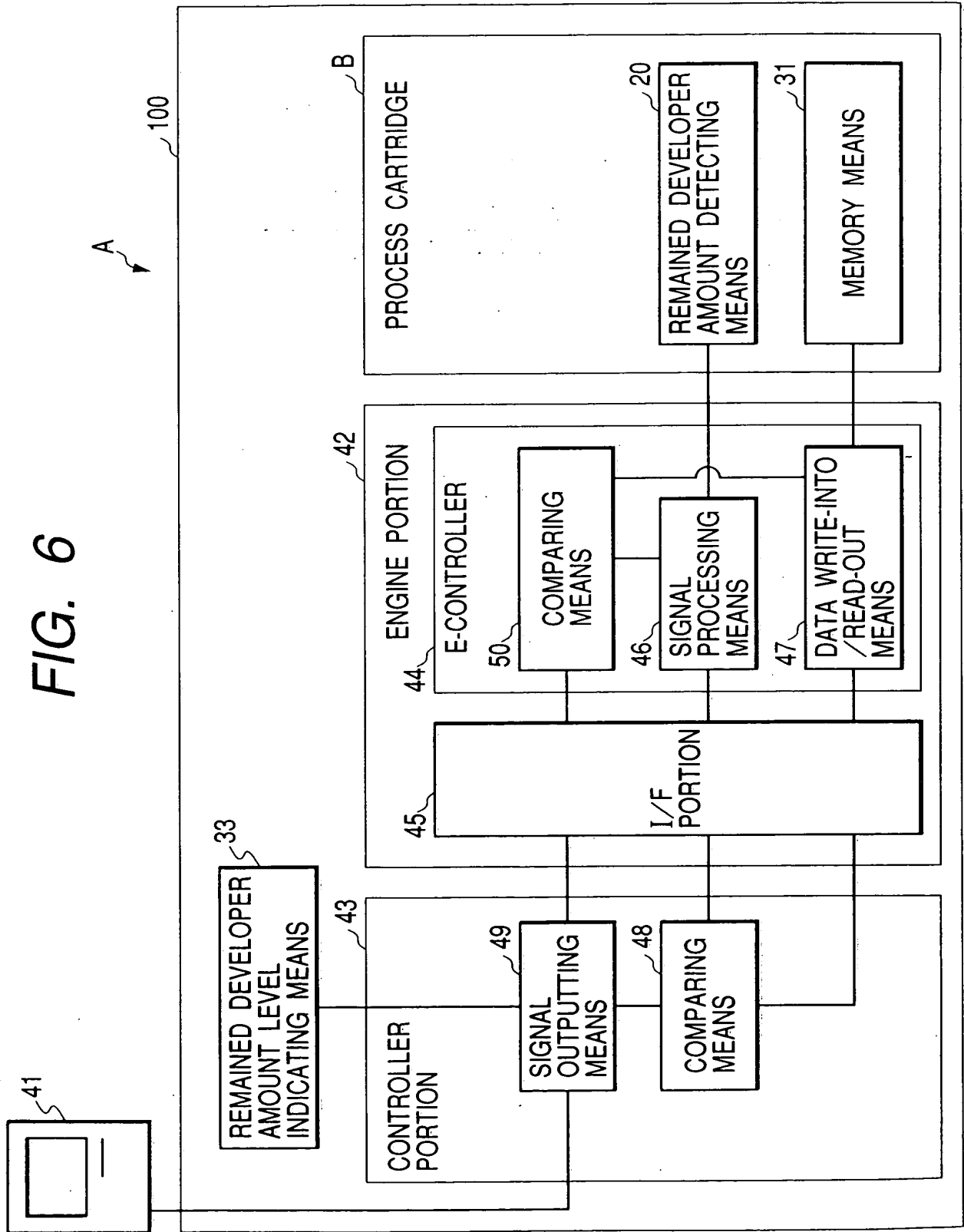
006280 25205960

APPROVED	O.G. FIG.	
BY	CLASS	SUBCLASS
DRAFTSMAN		

7 / 25

005280" 25205960

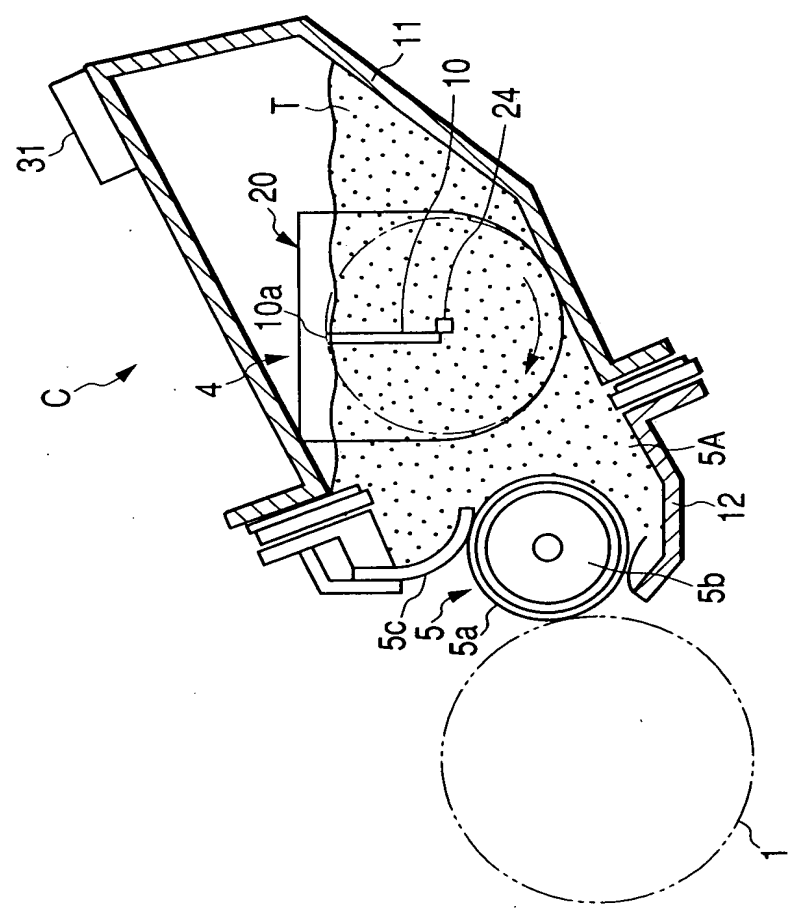
FIG. 6



APPROVED	O.G. FIG.	
BY	CLASS	SUBCLASS
DRAFTSMAN		

006280 25205960

FIG. 7

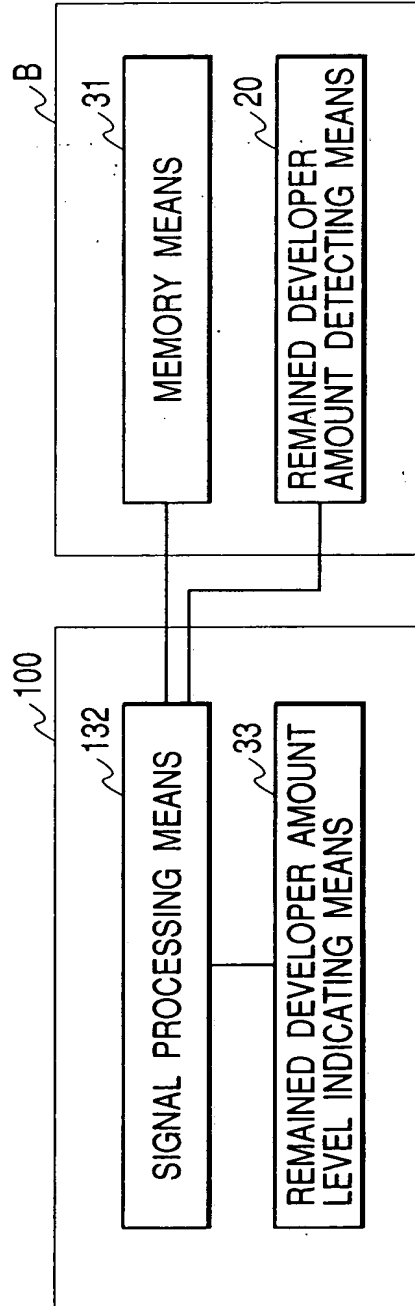


APPROVED	O.G. FIG.	
BY	CLASS	SUBCLASS
DRAFTSMAN		

9 / 25

005230-25205960

FIG. 8



APPROVED	O.G. FIG.	
BY	CLASS	SUBCLASS
DRAFTSMAN		

10 / 25

FIG. 9

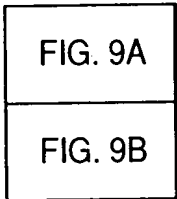
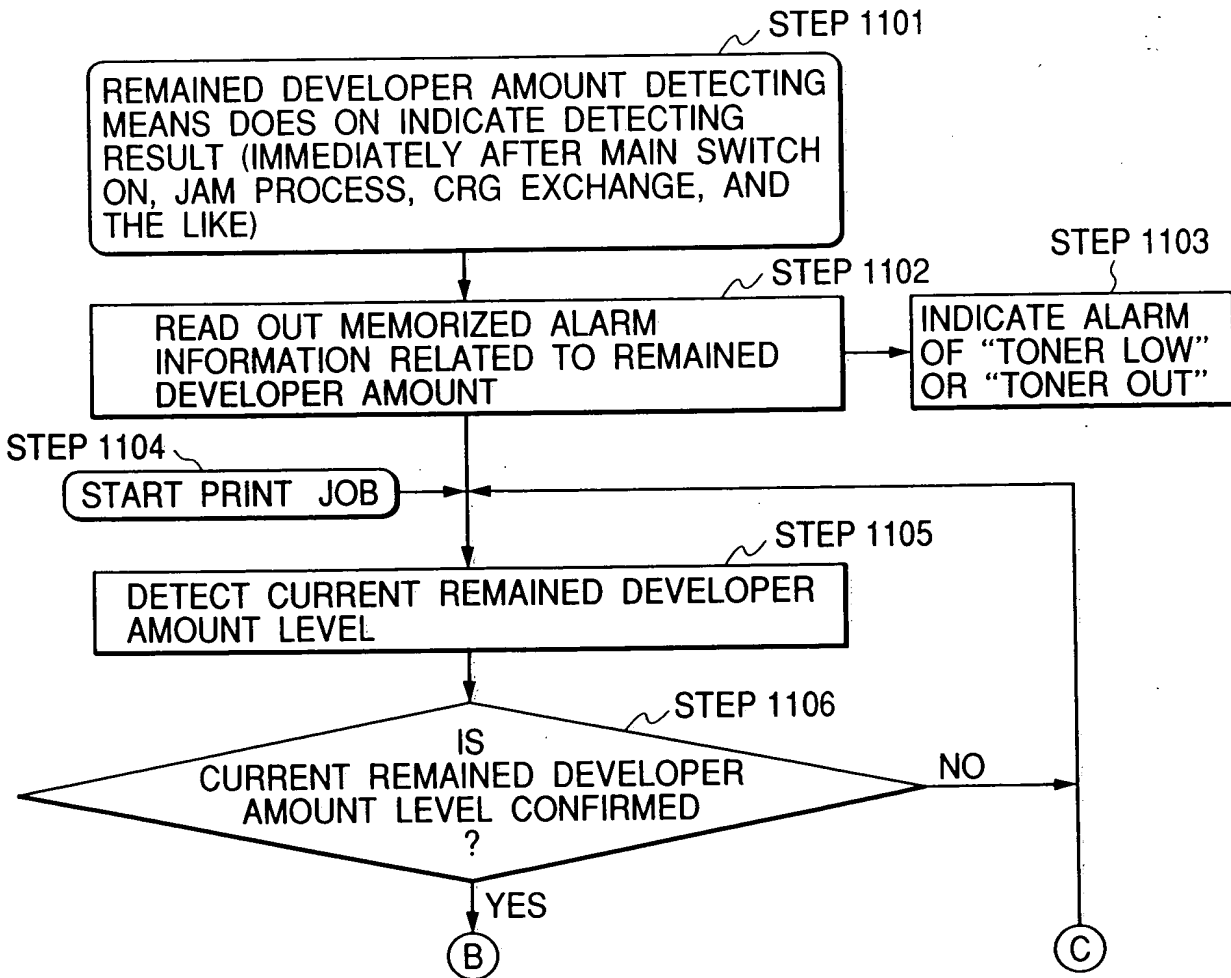
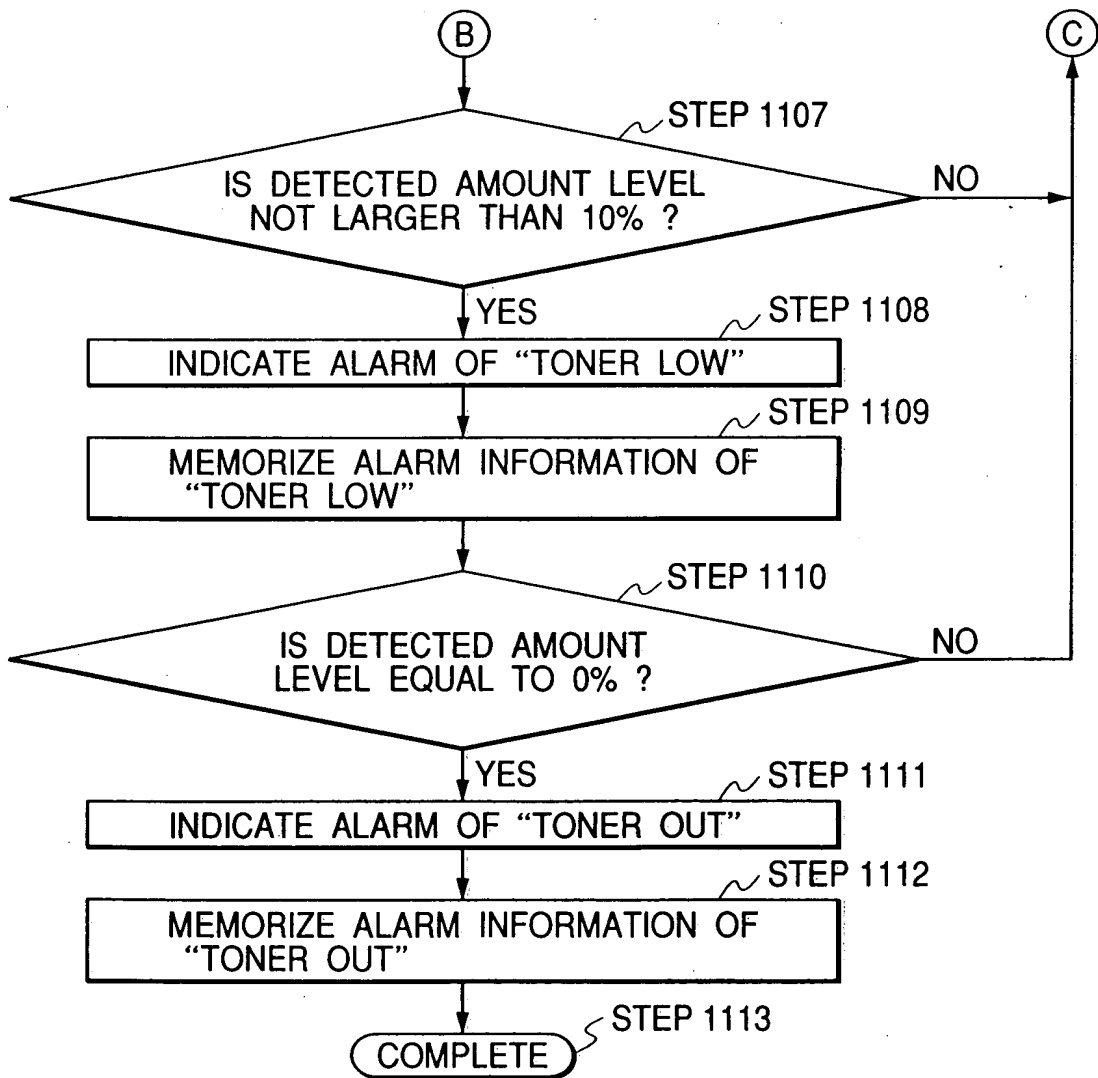


FIG. 9A



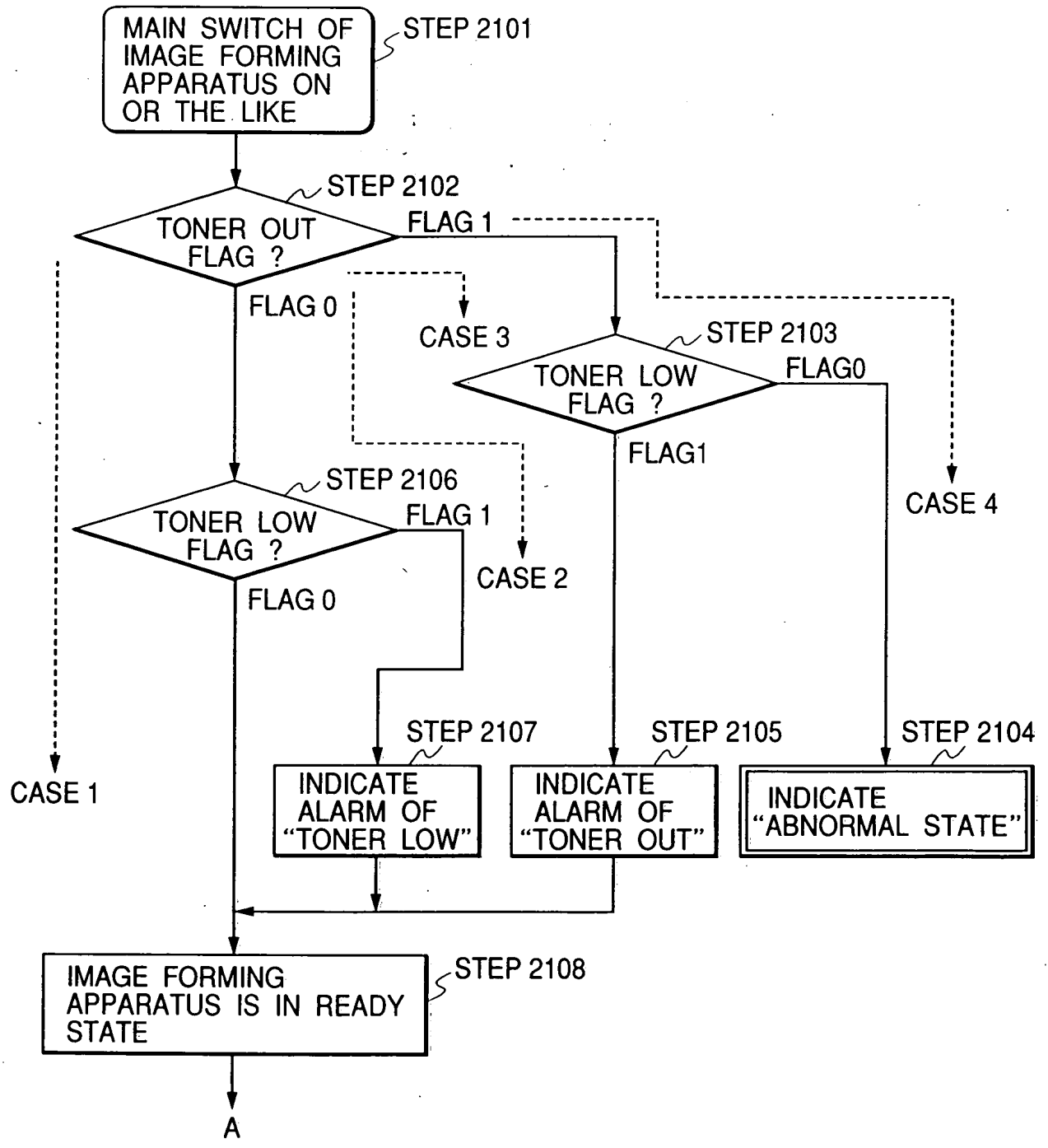
006280" 25205960

FIG. 9B



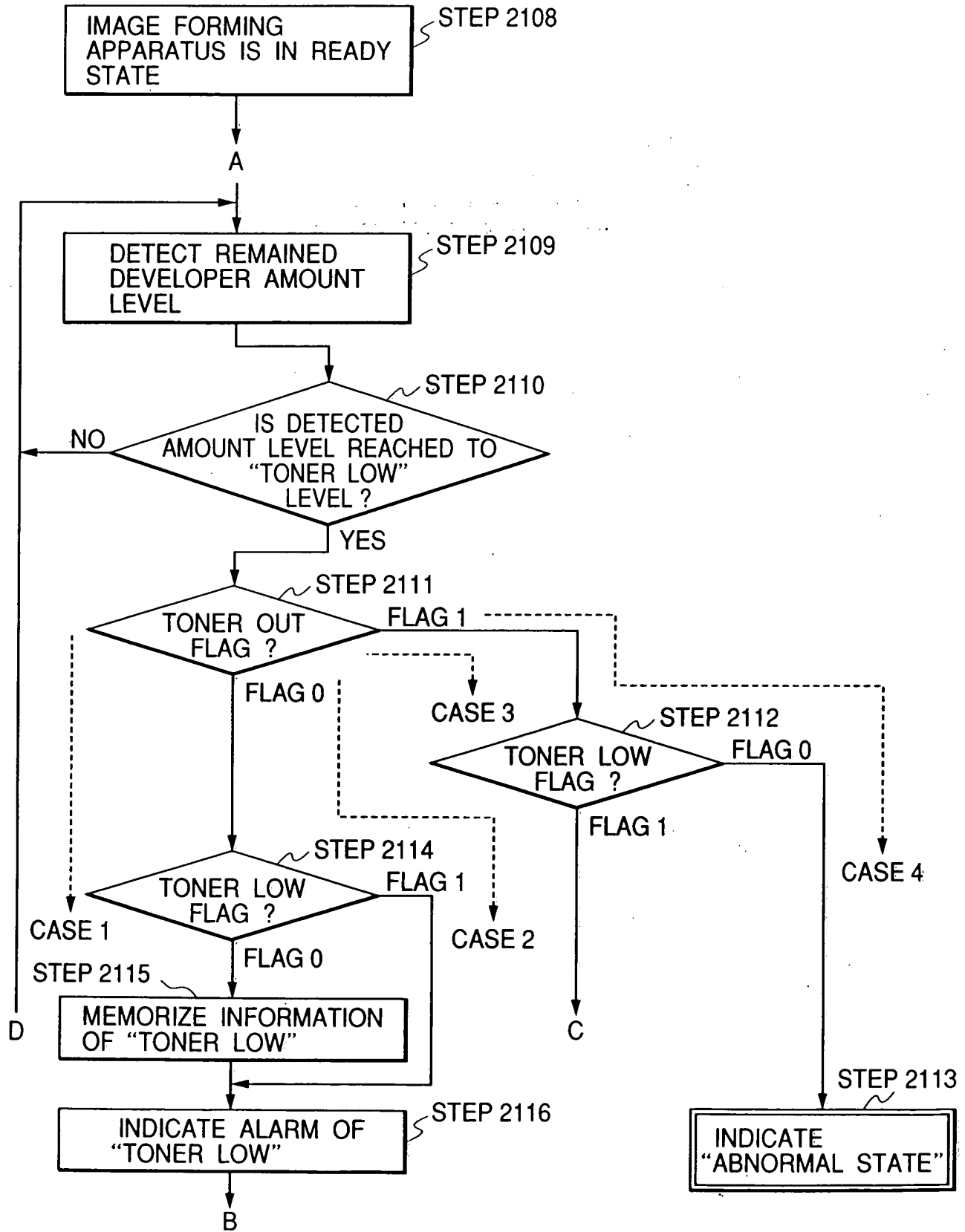
006280" 25205960

FIG. 10



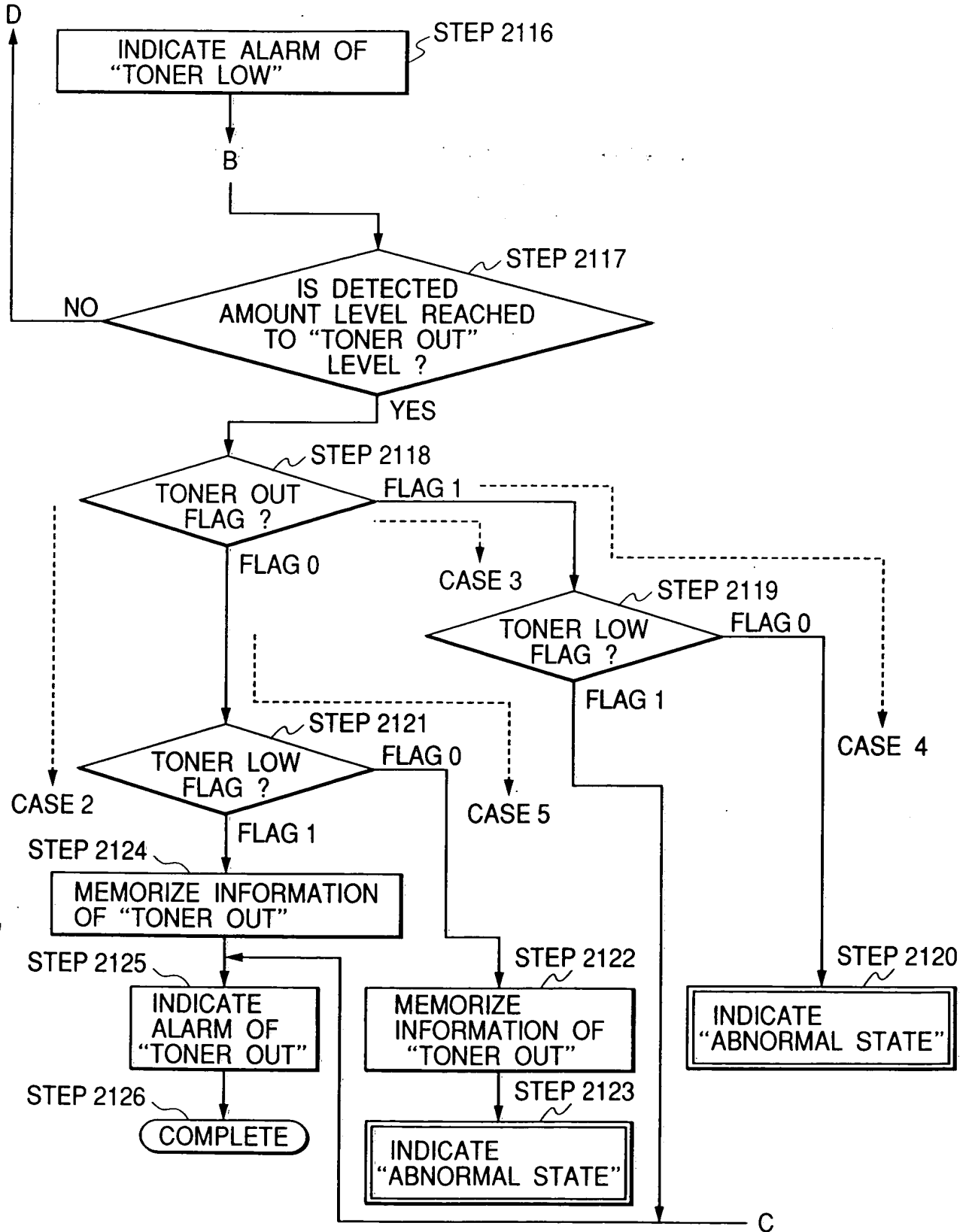
006280 25205950

FIG. 11



006280" 25205960

FIG. 12

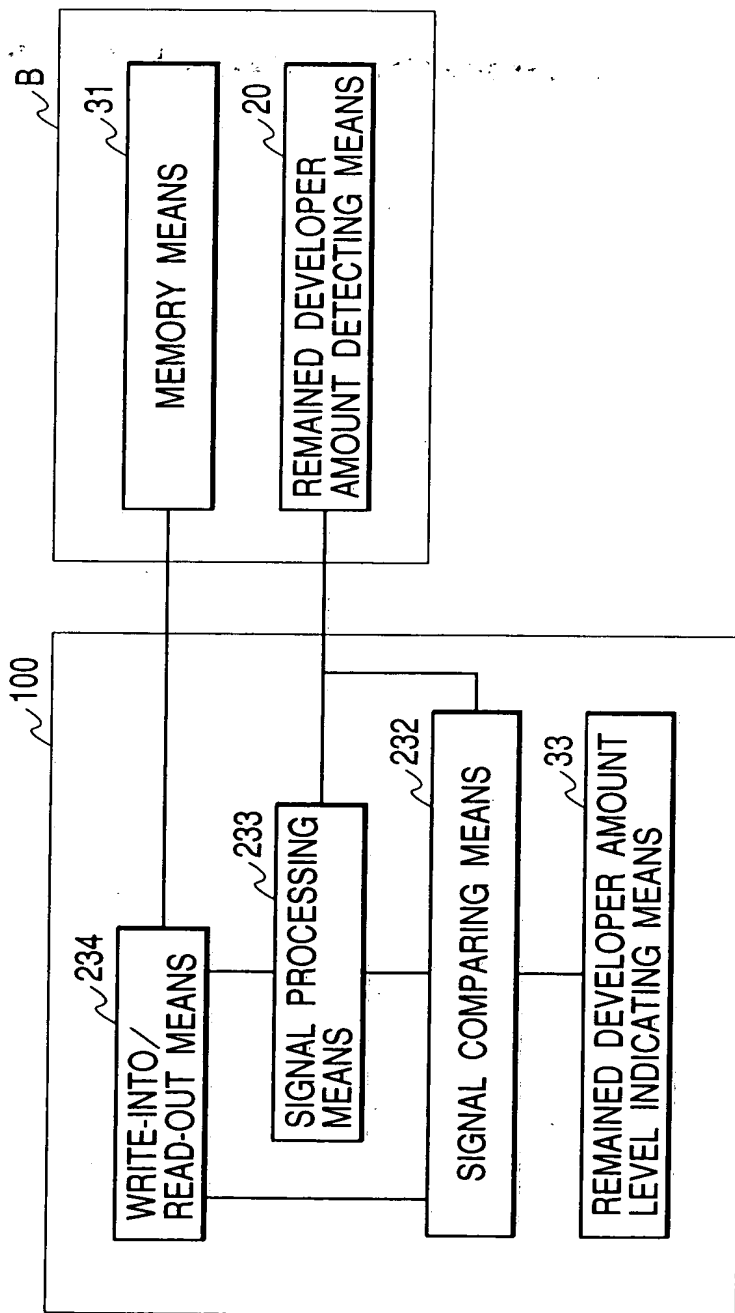


006280 2520560

APPROVED	O.G. FIG.	
BY	CLASS	SUBCLASS
DRAFTSMAN		

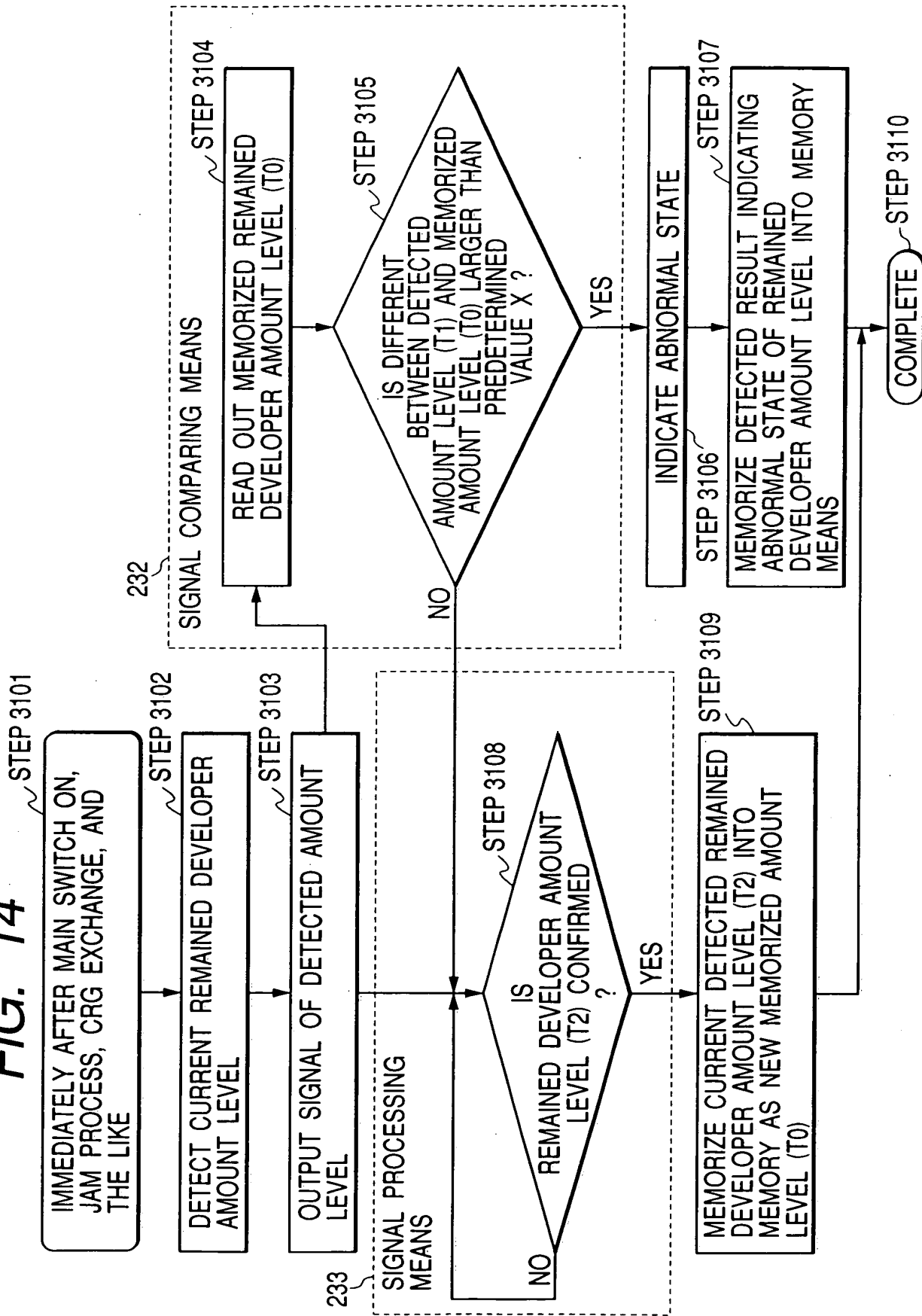
006280" 25205960

FIG. 13



006280" 25205960

FIG. 14



006280" 25205950

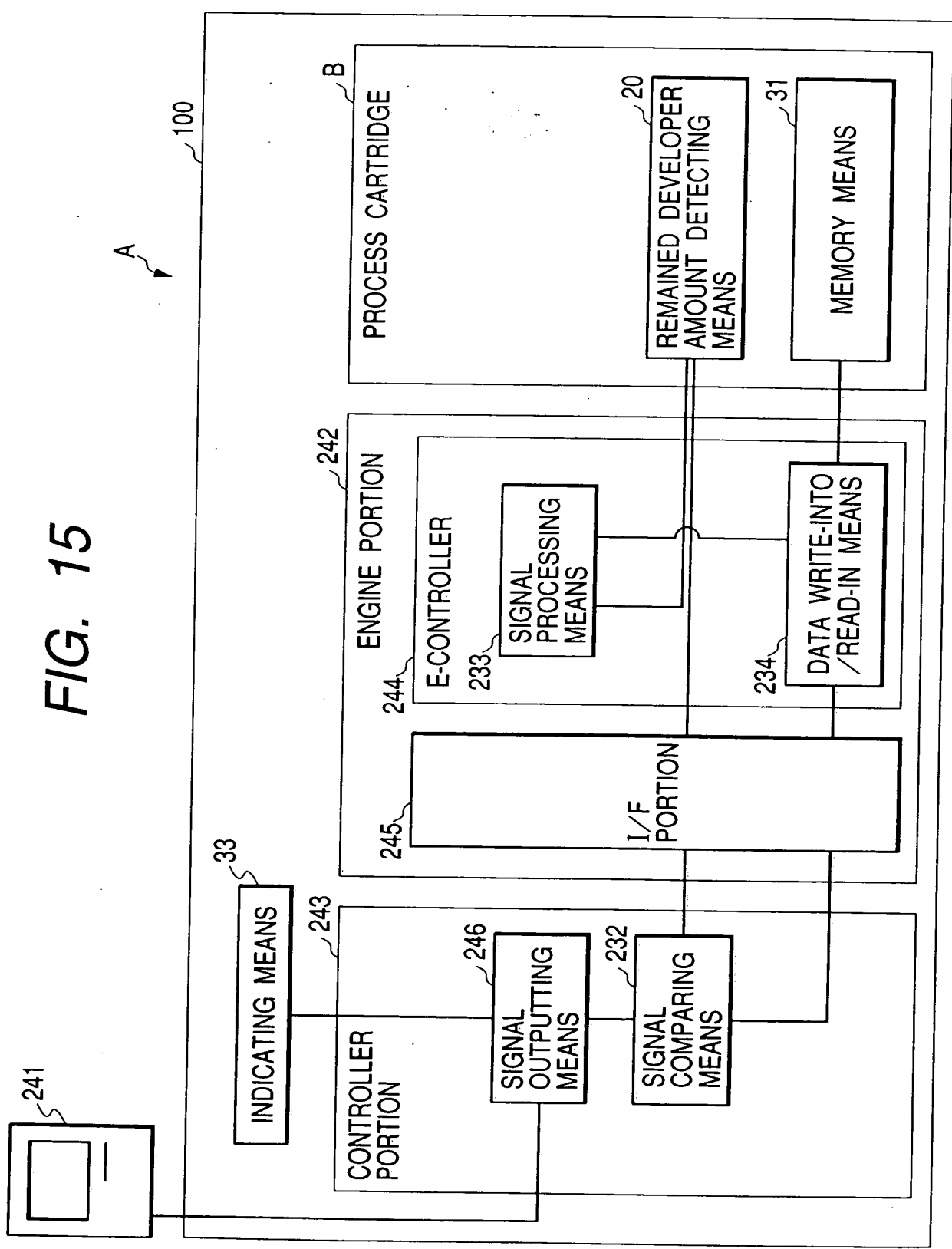
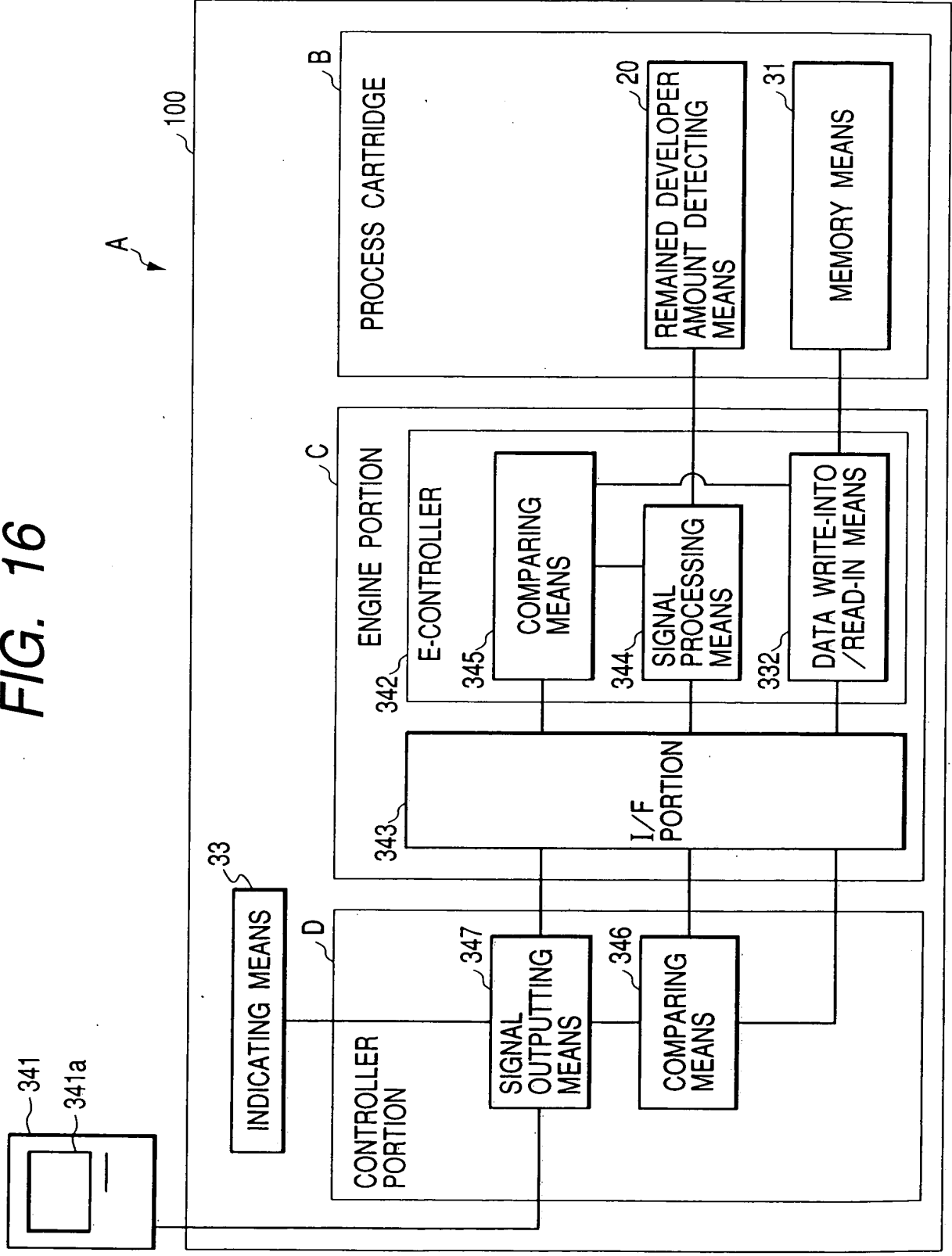


FIG. 15

APPROVED	O.G. FIG.
BY	CLASS
DRAFTSMAN	SUBJECT

006280" 25/05960

FIG. 16



APPROVED	O.G. FIG.	
BY	CLASS	SUBCLASS
DRAFTSMAN		

FIG. 17

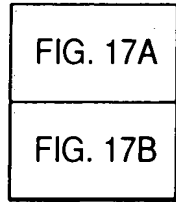
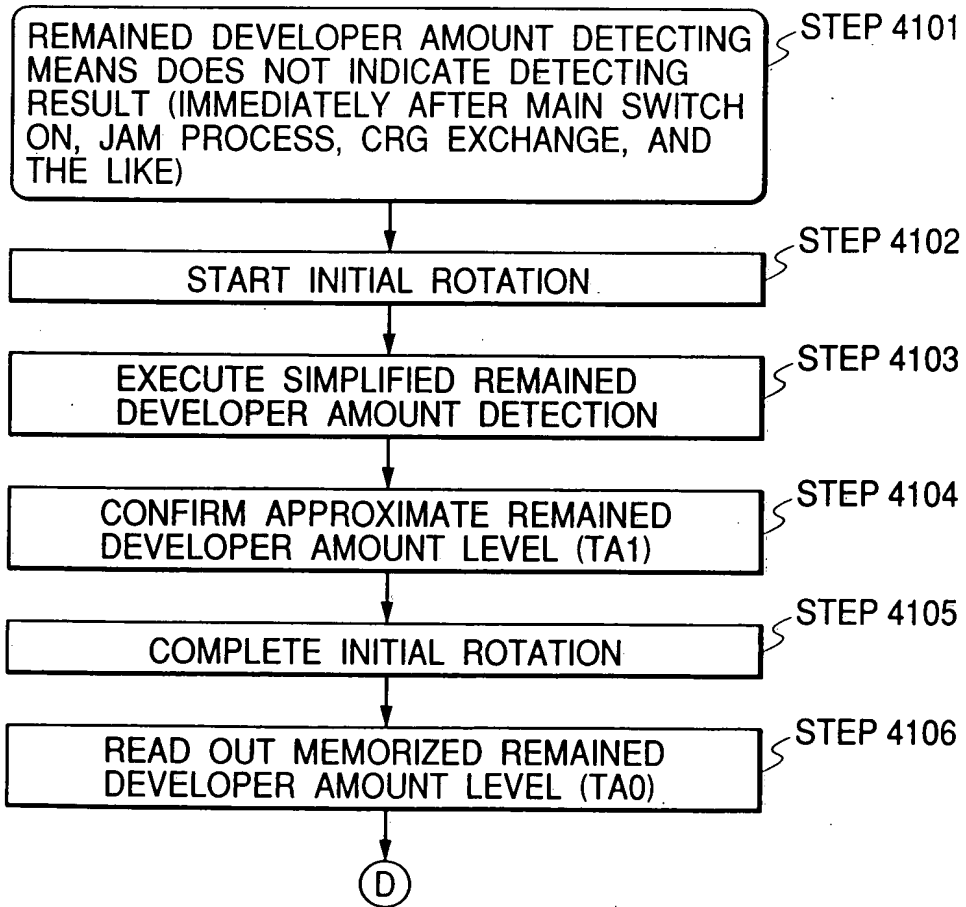
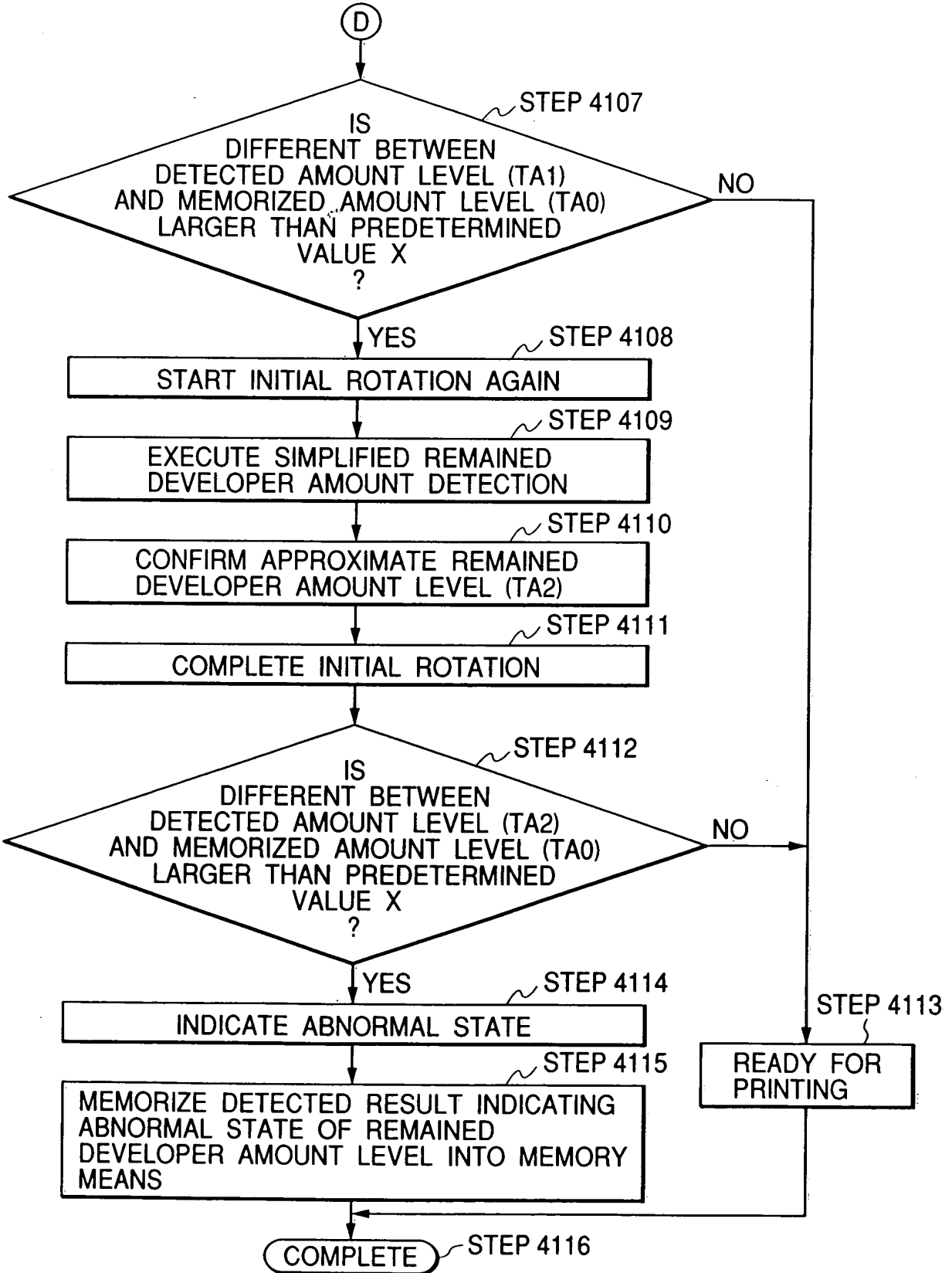


FIG. 17A



006280 25205960

FIG. 17B



006280" 25205960

FIG. 18

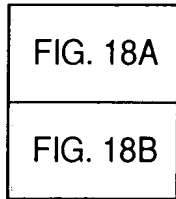
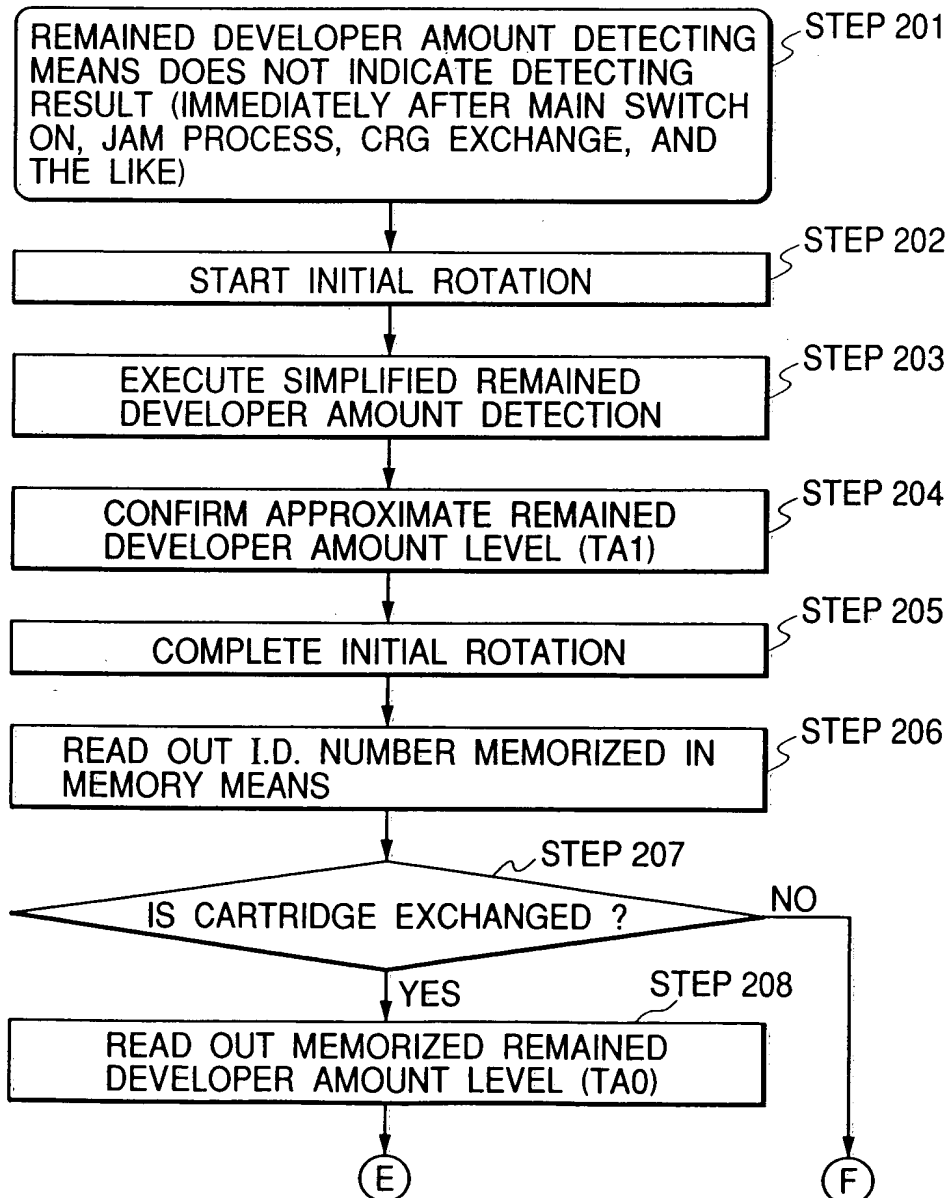
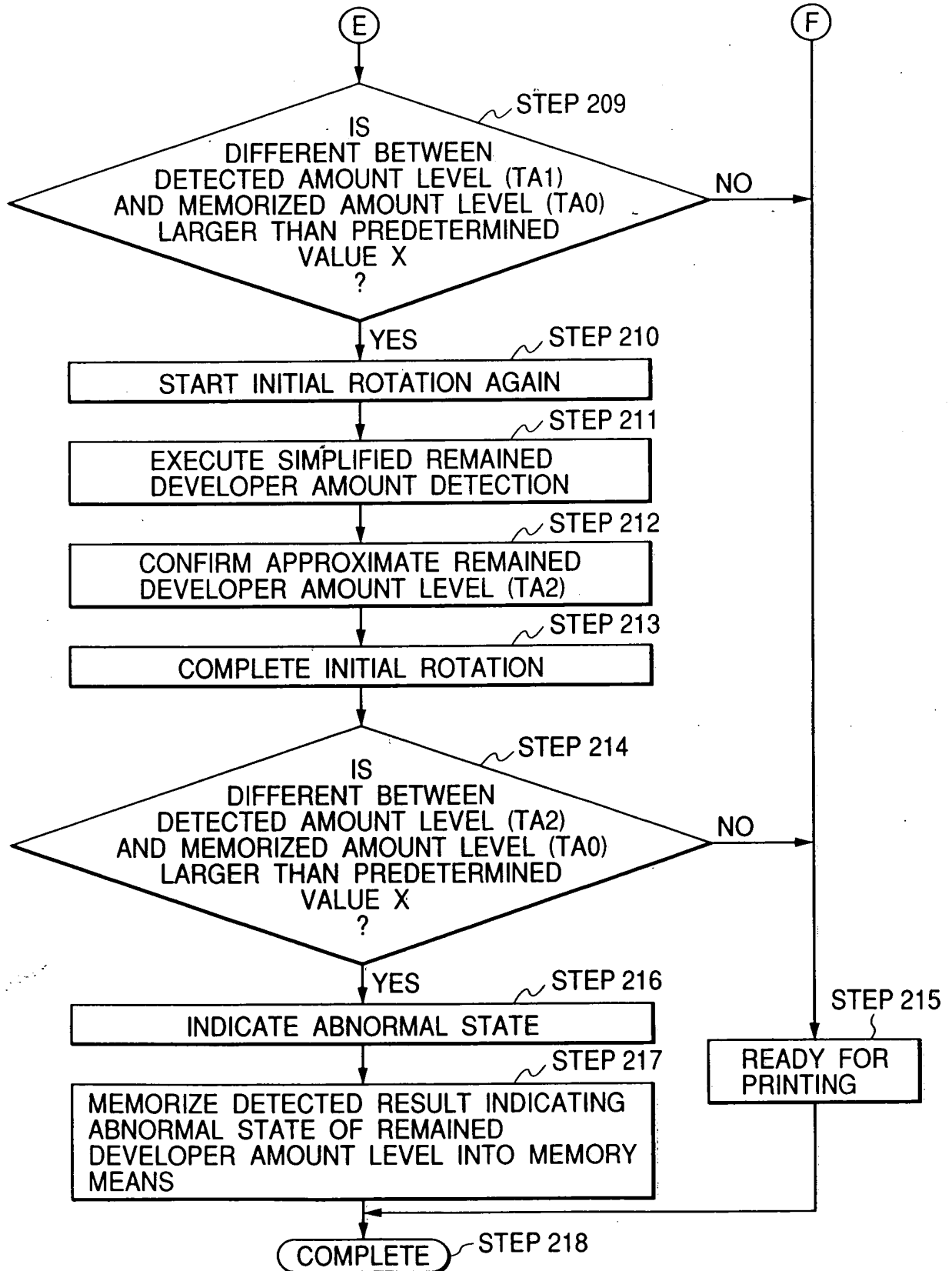


FIG. 18A



006280 25205960

FIG. 18B



006280-25205960

006280" 25405960

FIG. 19

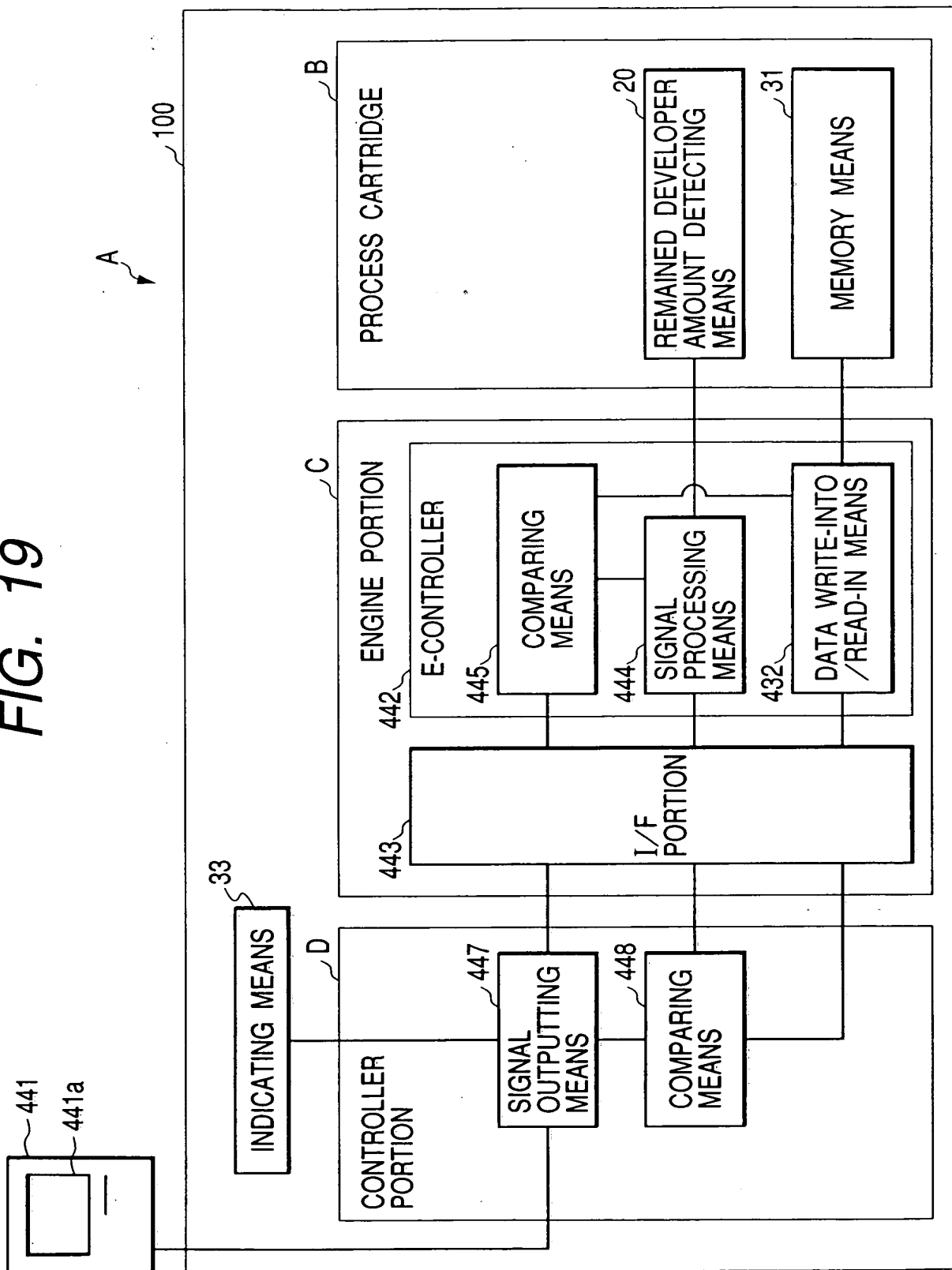


FIG. 20A STEP 5101

FIG. 20

REMAINED DEVELOPER AMOUNT DETECTING MEANS DOES NOT INDICATE DETECTING RESULT (IMMEDIATELY AFTER MAIN SWITCH ON, JAM PROCESS, CRG EXCHANGE, AND THE LIKE)

FIG. 20A
FIG. 20B

STEP 5102
 READ OUT MEMORIZED REMAINED DEVELOPER AMOUNT LEVEL (TA0) → INDICATE (TA0) STEP 5103

STEP 5111
 START PRINT JOB

STEP 5104
 EXECUTE SIMPLIFIED REMAINED DEVELOPER AMOUNT DETECTION

STEP 5110
 DETECT CURRENT REMAINED DEVELOPER AMOUNT LEVEL

STEP 5112
 IS CURRENT REMAINED DEVELOPER AMOUNT LEVEL (TA2) CONFIRMED ?
 YES / NO

STEP 5113
 READ OUT MEMORIZED REMAINED DEVELOPER AMOUNT LEVEL (TA0)

STEP 5105
 CONFIRM APPROXIMATE REMAINED DEVELOPER AMOUNT LEVEL (TA1)

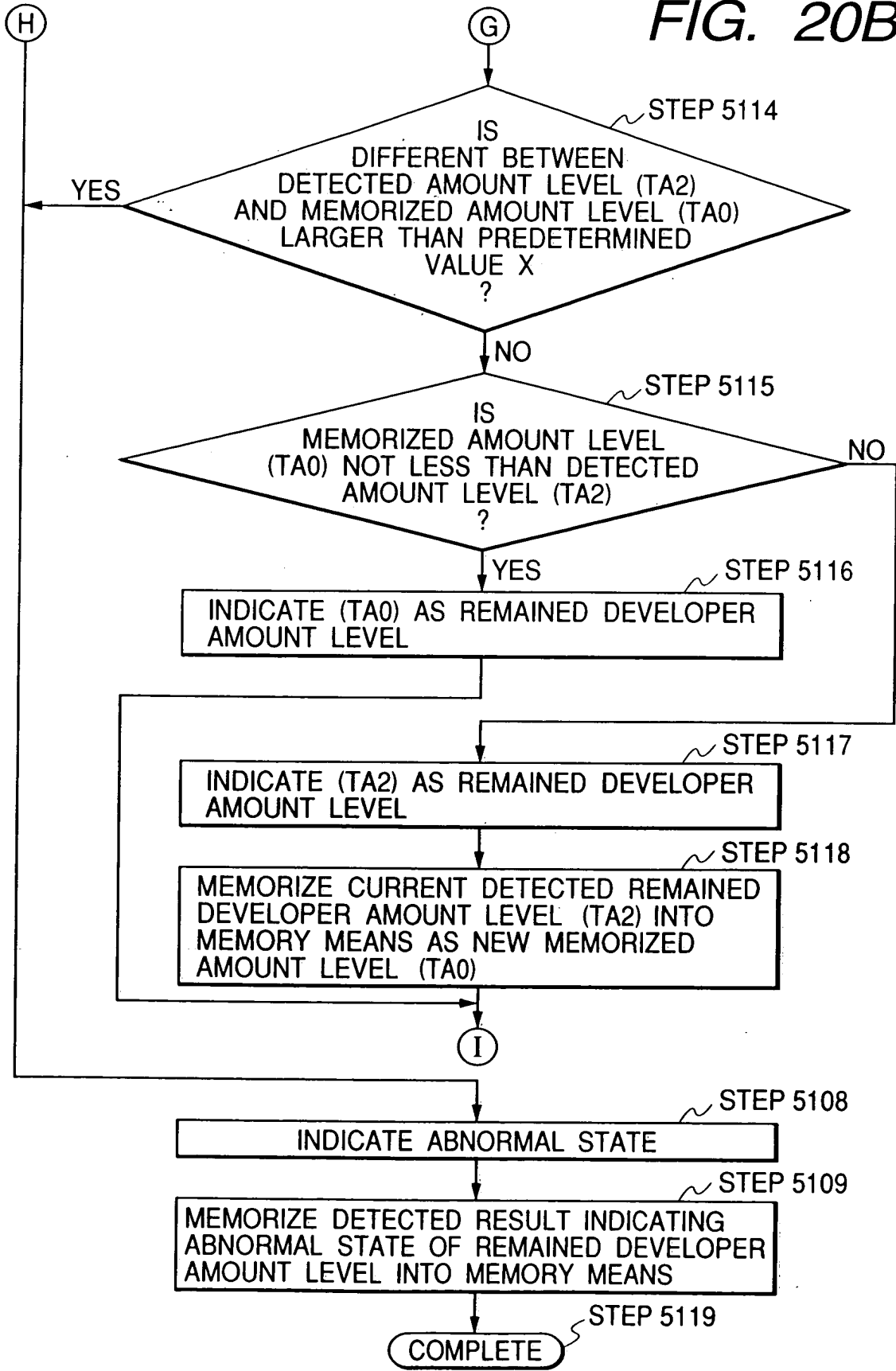
STEP 5106
 READ OUT MEMORIZED REMAINED DEVELOPER AMOUNT LEVEL (TA0)

STEP 5107
 IS DIFFERENT BETWEEN DETECTED AMOUNT LEVEL (TA1) AND MEMORIZED AMOUNT LEVEL (TA0) LARGER THAN PREDETERMINED VALUE X ?
 YES / NO

YES
 (H)

006280" 25205960

FIG. 20B



006280" 2575960